

modu lyss®

MINITUFT
CLEANING RECOMMENDATIONS



MINITUFT CLEANING RECOMMENDATIONS

Need a hand?

Minituft carpet tiles provide a clean minimalist aesthetic. In comparison to loop pile and multilevel loop pile products, minituft carpet tiles have a low profile structure. Due to this structure, specialised cleaning methods are recommended.

To help you enjoy your modulyss carpet as long as possible, we have compiled the following **minituft cleaning recommendations**. Retaining the beauty of your carpet requires a scheduled approach. The good news? Smart and regular maintenance repays itself many times over.

modulyss minituft® carpet tiles collections:

- | | |
|------------|--------------------|
| → Grind | Out of collection: |
| → Opposite | → Opposite Lines |
| → Blaze | → Converse100 |
| | → Reverse100 |

01 PREVENTATIVE MEASURES

Prepare & prevent

The lasting and beautiful character of a modulyss carpet tile is determined by the right choice of the quality and colour of the tile. In rooms with intensive foot traffic, it is best to opt for darker colours. The carpet has a greater dirt-concealing capacity in such a case.

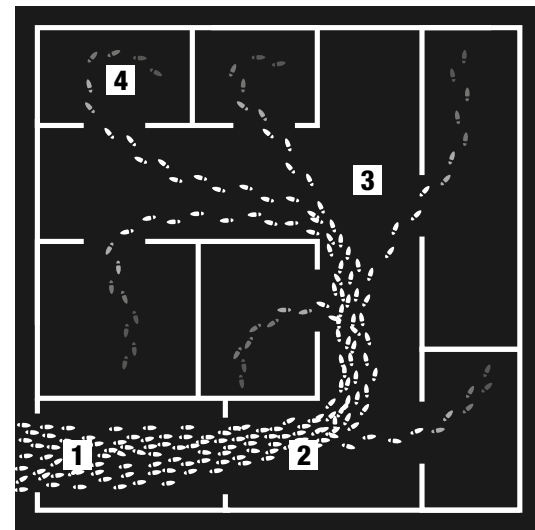
Clean-off zone

The protection of an interior starts with an optimal protection of the entrance. **85% of the dirt is brought in by shoes**, and that is why we recommend installing an efficient and sufficiently long clean-off zone (minimum 9 metres) where an entrance from the outside or from heavily soiled areas is possible.

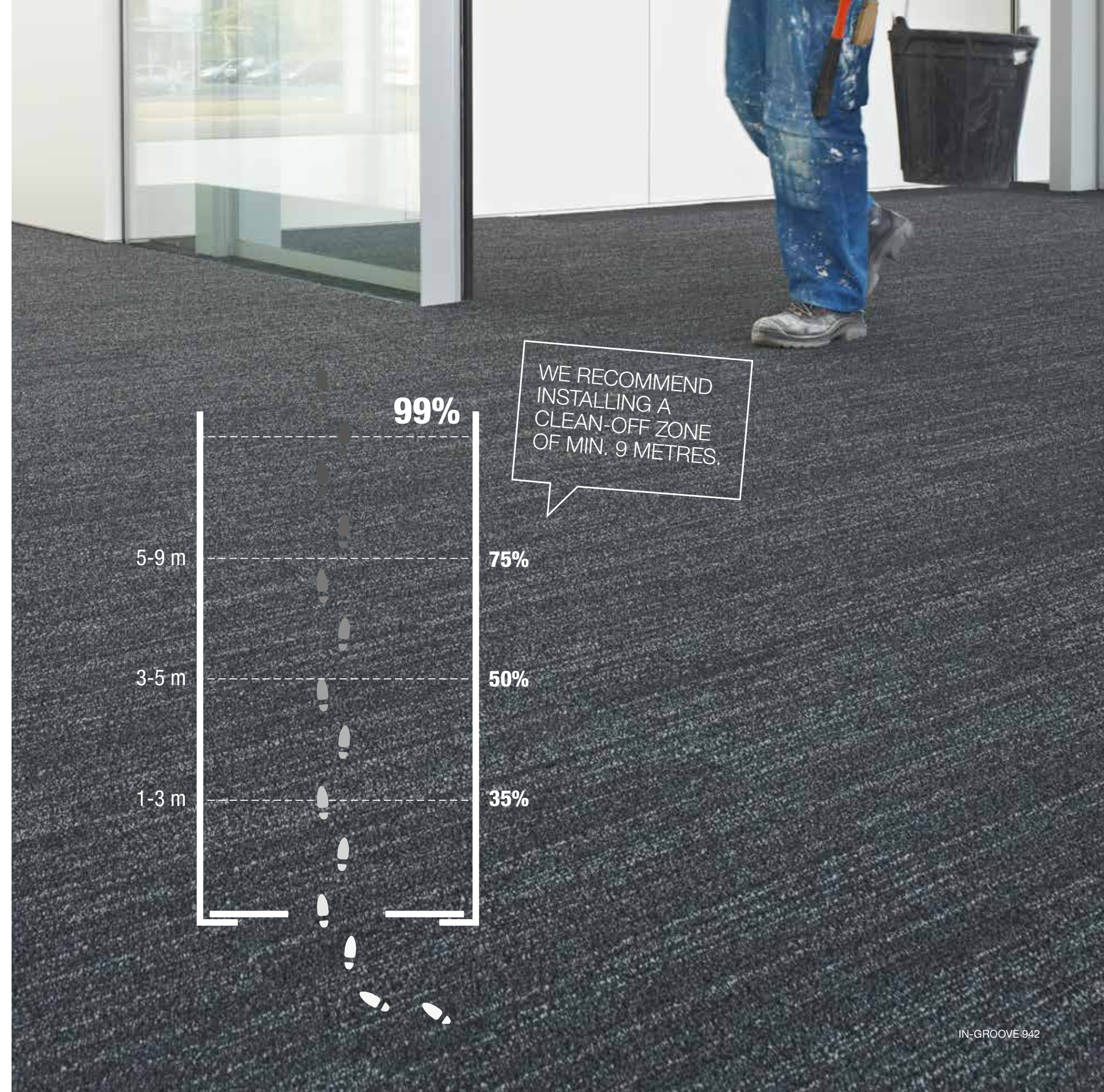
We recommend you to opt for a carpet tile with a darker colour and an irregular pattern. In-groove carpet tiles, made of sturdy, soil-resistant yarn, are ideally suited for clean-off zones.

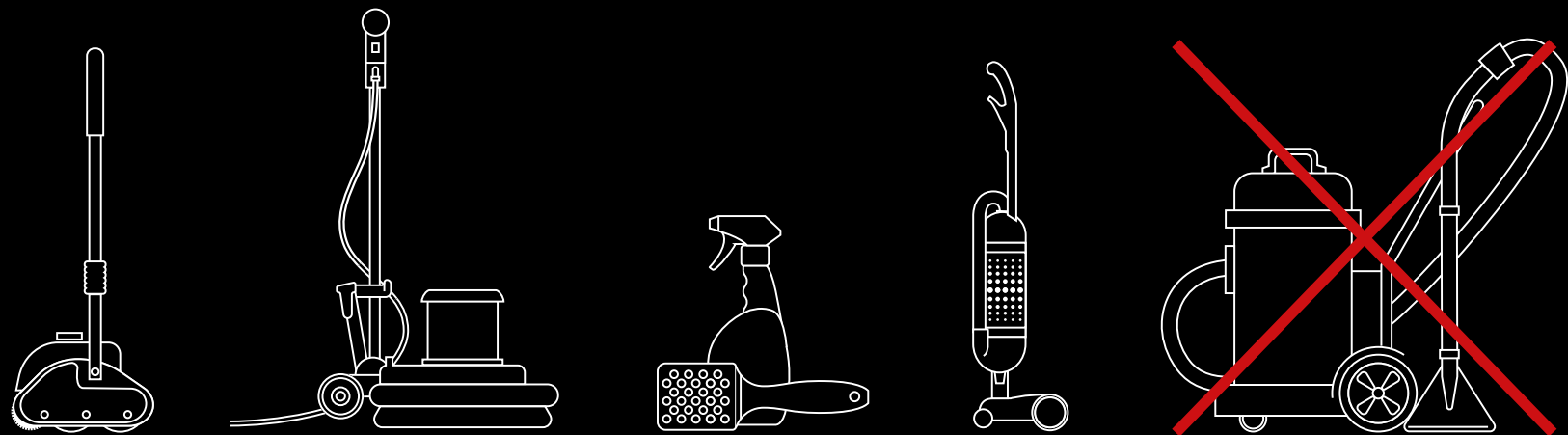
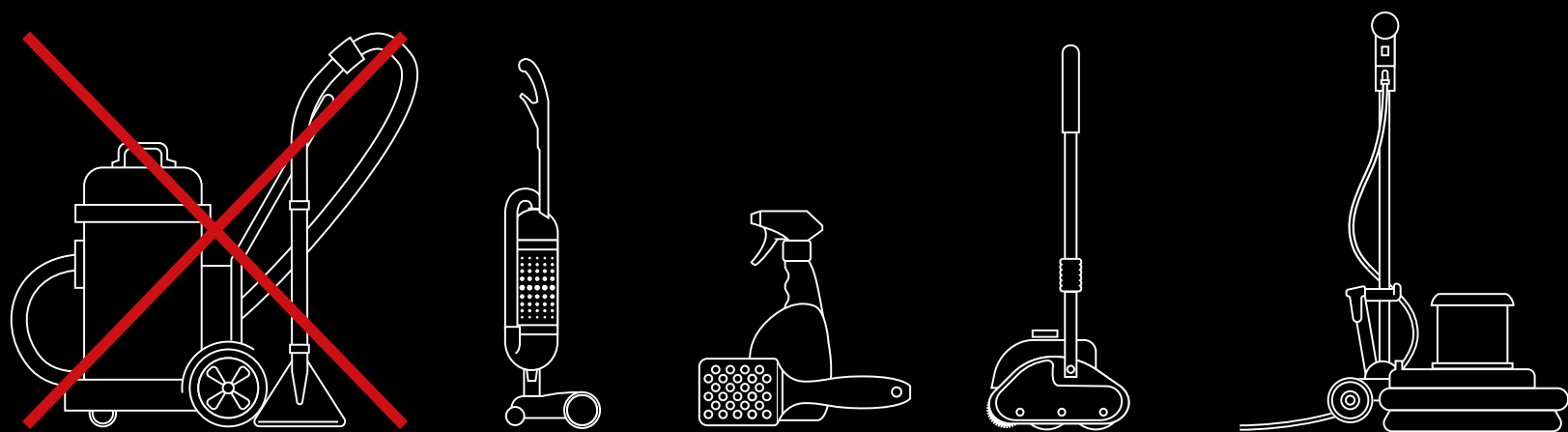
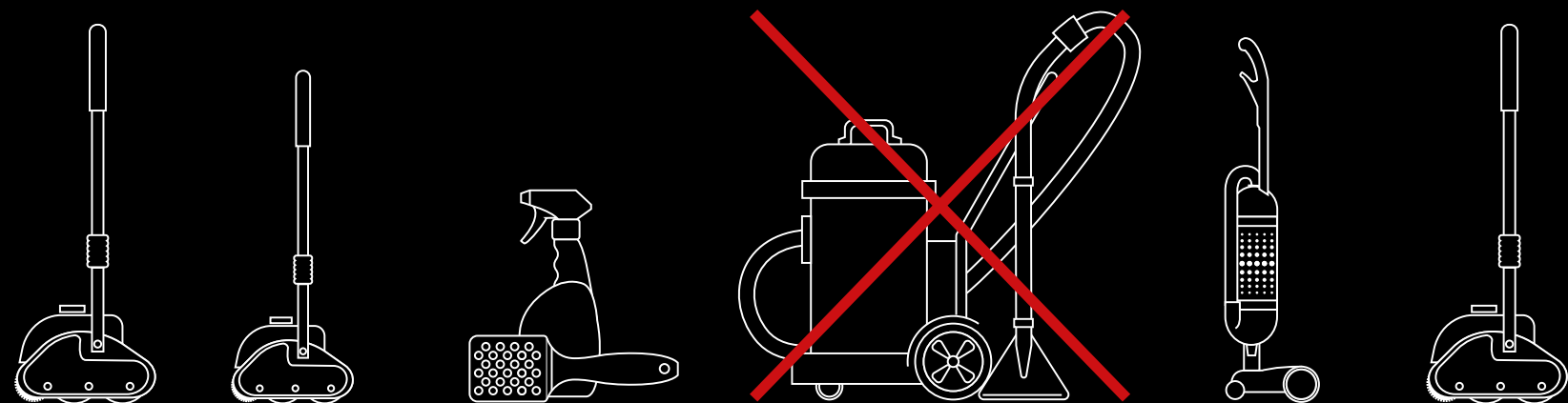
Types of traffic areas

An (office) space can be divided in 4 traffic areas:



- 1 Clean-off zone
- 2 Heavily intensive traffic area
- 3 Intensive traffic area
- 4 Normal traffic area





02 ROUTINE CLEANING

A CLEAN PLACE
MAKES
A HAPPY SPACE.

Daily maintenance

Vacuum cleaning using a brush vacuum cleaner constitutes the basis of daily maintenance. It can remove about 80% of the dirt from the carpet. Furthermore, a brush vacuum cleaner helps to retain the appearance of a carpet tile's pile. Do not forget to regularly replace the vacuum cleaner bag.

The vacuuming frequency is determined by the foot traffic and the soiling of the carpet:

- **Heavily intensive traffic:** 1 x per day
- **Intensive traffic:** 2 to 3 x per week
- **Normal traffic:** 1 x per week

Recommended machinery: see page 12.

03 SPOT CLEANING

Spot removal

We recommend that marks be removed from the carpet immediately, as old spots are far more difficult to clean.

Take the following tips into account:

- remove solids using a spoon or spatula;
- remove liquids using a clean white cloth or blotting paper;
- always treat the mark using a clean damp cloth;
- work from the edges towards the middle of the mark, with the pile;
- dab the mark, but never rub it.

When removing marks, carefully follow the instructions mentioned on the cleaning products. Always use products that are pH neutral and avoid products with chlorine (e.g. bleach) or chemically aggressive oxidants. We recommend pre-testing an inconspicuous area for colour fastness and material durability.

Removing water-based marks

Sprinkle the agent directly on the carpet. Do not use the agent if the carpet leaves a coloured mark on the cloth. Subsequently, use the dry cleaning agent as follows:

- 1 After removing a semi-hardened or hardened mark, dab at the mark with a clean damp cloth. Then remove the remaining soiling with a small quantity of a dry cleaning agent. Sprinkle the cleaner over the mark and brush it in carefully with a hand brush.
- 2 Let the area dry for around 15 to 30 minutes and brush the cleaner in again. If the cleaner appears to be sticking to the carpet, brush carefully and vacuum the affected area. If necessary, repeat the process.

Removing oil-based marks

To remove oil-based marks such as paint, fat, tar, asphalt, etc., use specialist carpet stain removers. Sprinkle the remover on a clean, white cloth and press it onto the carpet. Do not use the remover if the carpet leaves a coloured mark on the cloth. Subsequently use the stain remover as follows:

- 1 Wipe carefully inwards from the outside edge of the mark. Repeat the procedure until the mark has been removed. Following chemical treatment, rinse the mark with a damp cloth to remove cleaner residue. Protect the cleaned part until the carpet is completely dry.
- 2 Afterwards treat with a dry cleaner as described under ‘removing water-based marks’.

Removing dried-on and stubborn marks

Marks that are hard to remove like rust, varnish, coffee, chewing gum and soft drinks require specialist treatment (see spot removal chart).

In case the stubborn mark cannot be removed, call in an expert who can use the right products to avoid damaging the carpet. Recommended products: see page 12.

STAIN	TREATMENT
Coffee, thee, soft drinks and wine Blood, urine and vomit	Moisten a towel with cold water and let it absorb the fluid. Repeat until all fluid has been absorbed. Let the carpet dry and spray the stain with the Crystal Spot Remover®. Brush away with the Spotting Tool®.
Food and fruit	Remove all loose elements with a tea spoon. Spray the stain with the Crystal Spot Remover® and brush away with the Spotting Tool®.
Chewing gum	Spray the stain with a gum freezer. Scrape off the chewing gum with a tea spoon. Follow up with a little Oil & Grease® on a dry cloth.
Shoe polish	Apply a little Oil & Grease to a dry cloth and dab the stain away. Then spray the stain with the Crystal Spot Remover® and brush away with the Spotting Tool®.
Stickers, paint, sealant and glue	(Remove the sticker). Let the (remaining) stain dry and scrape it off with a tea spoon. Apply a little Oil & Grease® to a dry cloth and dab the stain away. Spray the stain with the Crystal Spot Remover® and brush away with the Spotting Tool®.

These spot removal tips apply to all modulyss carpet tile styles: loop pile, cut pile and mini-tuft. modulyss cannot guarantee that the recommended products will remove all stains.

CRYSTAL DRY METHOD

04 SPECIALISED MAINTENANCE

PROLONG YOUR
CARPET'S LIFE-CYCLE
THROUGH SPECIALIST
CLEANING.

11

The goal of specialised maintenance is to keep the carpet clean and maintain a consistent appearance level. We recommend to execute the specialised maintenance 2 to 3 times per year depending on the foot traffic and the soiling of the carpet.

Minituft products require low moisture or dry cleaning only. We recommend two cleaning methods depending on the level of soiling.

Bonnet cleaning method

We recommend to use the Bonnet cleaning method in case of light soiling. First apply Crystal Dry Extra® onto the surface. Next agitate the surface utilising a Bonnet machine to which a 100% cotton bonnet has been attached. After the area has dried completely, the carpet should be vacuum cleaned.

In case an additional treatment would be needed, use the Bonnet cleaning method and moisturise the carpet with Crystal Dry Extra®.

Encapsulation method

We recommend to use the Encapsulation method in case of heavy soiling. The encapsulation method is the next-generation approach to effective periodic maintenance and can be performed by means of the **Smart Care® TRIO System** machine.

Before starting, examine the carpet for accidental spots. They should be removed with the Crystal Spot Remover® & Spotting Tool®.

The **Crystal Dry Method** deposits cleaning product in solution onto the surface as mist (low moisture). Crystals, made up of polymers, are sprayed over the carpet. The Triomachine then brushes the carpet so that the dirt and dust are encapsulated into the crystals. The result? A crystalline residue that encapsulates foreign soils. The soil-laden crystals are removed easily by vacuuming.

Advantages:

- highly effective;
- dry process: no sticky residue will remain in the carpet;
- the carpet can be used immediately after cleaning;
- less to no noise pollution
- prescribed and advised by all recognised carpet manufacturers;
- Green seal certified;
- no odours.

Committed to reducing our environmental impact, modulyss recommends this water-saving, sustainable solution for carpet cleaning. Recommended machinery: see page 13.



CAUTION: the hot water extraction method should **not** be used on the modulyss minituft® carpet tiles. These products require low moisture or dry cleaning only.

RECOMMENDED AND APPROVED MACHINERY & PRODUCTS^{(1) (2)}

ROUTINE CLEANING

- **Basic vacuum cleaner** (for everyday use)
- Specialised vacuum cleaner:
brush vacuum cleaner type **SEBO Dart 2**

Sebo Dart 2 offers professional performance in a light-weight, versatile and easy to manoeuvre machine. Designed to be agile and user-friendly, SEBO Dart 2 achieves superb cleaning results.



SEBO DART 2

Vacuum motor: 1300
Brush motor: 200 Watt
Air flow: 50 l/s
Working width: 370 mm
Brush speed: 2700 rpm
Weight: 7.4 kg
Cable length: 9.5 m
Filter S-class
Filter bag: 3.5 L
3 layers

SPOT CLEANING

- **Spot removal**

The Crystal Spot Remover® is a stain-removal agent based on crystals. Combined with the Spotting Tool®, Crystal Spot Remover® is the perfect product for easy and safe removal of stains for commercial carpet. Using chamfered openings instead of bristles, the Spotting Tool® lifts stains by mildly agitating the fibers.



CRYSTAL SPOT REMOVER®

Stain-removal agent based on crystals
Used in combination with the Spotting Tool®

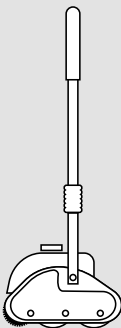
SPECIALISED MAINTENANCE

- **Encapsulation method**

The Smart CARE® Trio machine is a low-moisture agitation and crystallization carpet maintenance system.

Periodic maintenance: Smart CARE® Trio machine + Crystal Dry Extra®

Deep cleaning: Smart CARE® Trio machine + Crystal Quick Restore (replaces the hot water extraction method)



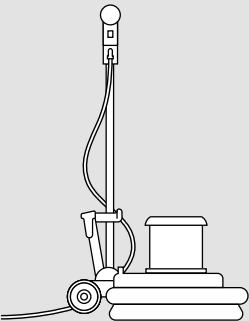
SMART CARE® TRIO MACHINE

UNIT 15 inch / 20 inch
Power: 1100 Watt / 1400 Watt
Cleaning capacity: 200 m²/h
Deep cleaning capacity: 100 m²/h
Cleaning width: 381 mm / 508 mm
Brush speed: 480 rpm / 665 rpm
Dry weight: 30 kg / 34 kg
Voltage: 230 V
Frequency: 60 Hz
Fresh water tank capacity: 9.5 L

- **Bonnet cleaning method**
(for minituft® carpet tiles only)

The Bonnet cleaning method, a low-moisture cleaning system, is a rotary floor machine with a cotton cleaning pad. As it moves over the carpet, the agitation causes dirt to be absorbed into the cotton cleaning pad.

This cleaning method can only be used on the modulyss minituft® carpet tiles.



BONNET CLEANING MACHINE

Power: 1200 Watt/1500 Watt
Voltage: 230-240 V
Frequency: 60Hz
Capacity: 0 L
Weight: 22-30 kg

(1) Our list of recommended machinery is just that: a recommendation. Naturally, equivalent models may be used.
(2) All machinery and products are tested & approved by The Carpet and Rug Institute (CRI).

RECOMMENDED CLEANING COMPANY

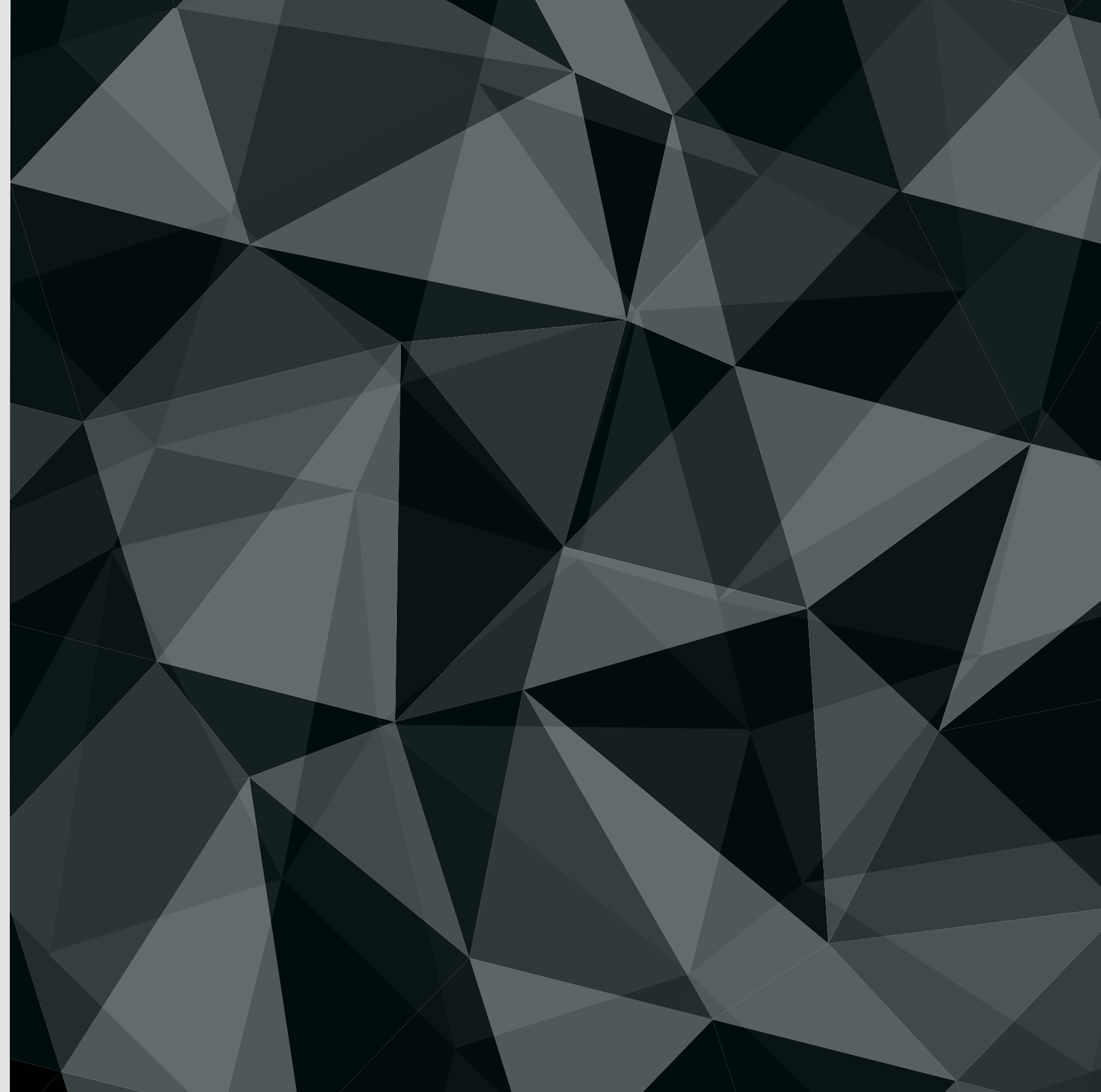
For additional advice on cleaning methods, products or local Progenta partners, please contact your local modulyss sales representative or:

Progenta Projects services (headquarters)
Veenendaalsestraatweg 14b
3921 EC Elst (Utr)
The Netherlands
Tel. 0031 (0) 318 – 471 823
info@progenta.com

WARRANTY

For optimal results, a regular cleaning of the carpet tiles is required. The carpet tiles must be cleaned and maintained in accordance with the modulyss cleaning recommendations. If it is ascertained that the carpet tiles are not cleaned in an appropriate way, or if the hot water extraction method is used, modulyss cannot be held liable for errors resulting from unprofessional cleaning.

Moreover, this will result in the loss of the company's **15-year warranty** coverage.





www.modulyss.com